

Electrical Wiring Diagram

Nr.	Document Type	Page	Page Description	Note	Designed by	Date
1	0) DOCUMENT INDEX	1			Perinelli	23.08.2019
2	1) ELECTRICAL DIAGRAM	1	ELECTRICAL DIAGRAM		Perinelli	23.08.2019
3	1) ELECTRICAL DIAGRAM	2	ELECTRICAL DIAGRAM		Perinelli	02.11.2016
4	1) ELECTRICAL DIAGRAM	3	ELECTRICAL DIAGRAM		Perinelli	12.10.2016
5	1) ELECTRICAL DIAGRAM	4	SEQUENCE DIAGRAM		Perinelli	02.11.2016
6	1) ELECTRICAL DIAGRAM	5	FLOW CHART		Perinelli	02.11.2016
7	2) LEGEND	1			Perinelli	23.08.2019
8	3) WARNINGS	1			Bettarello	20.12.2002

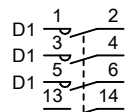
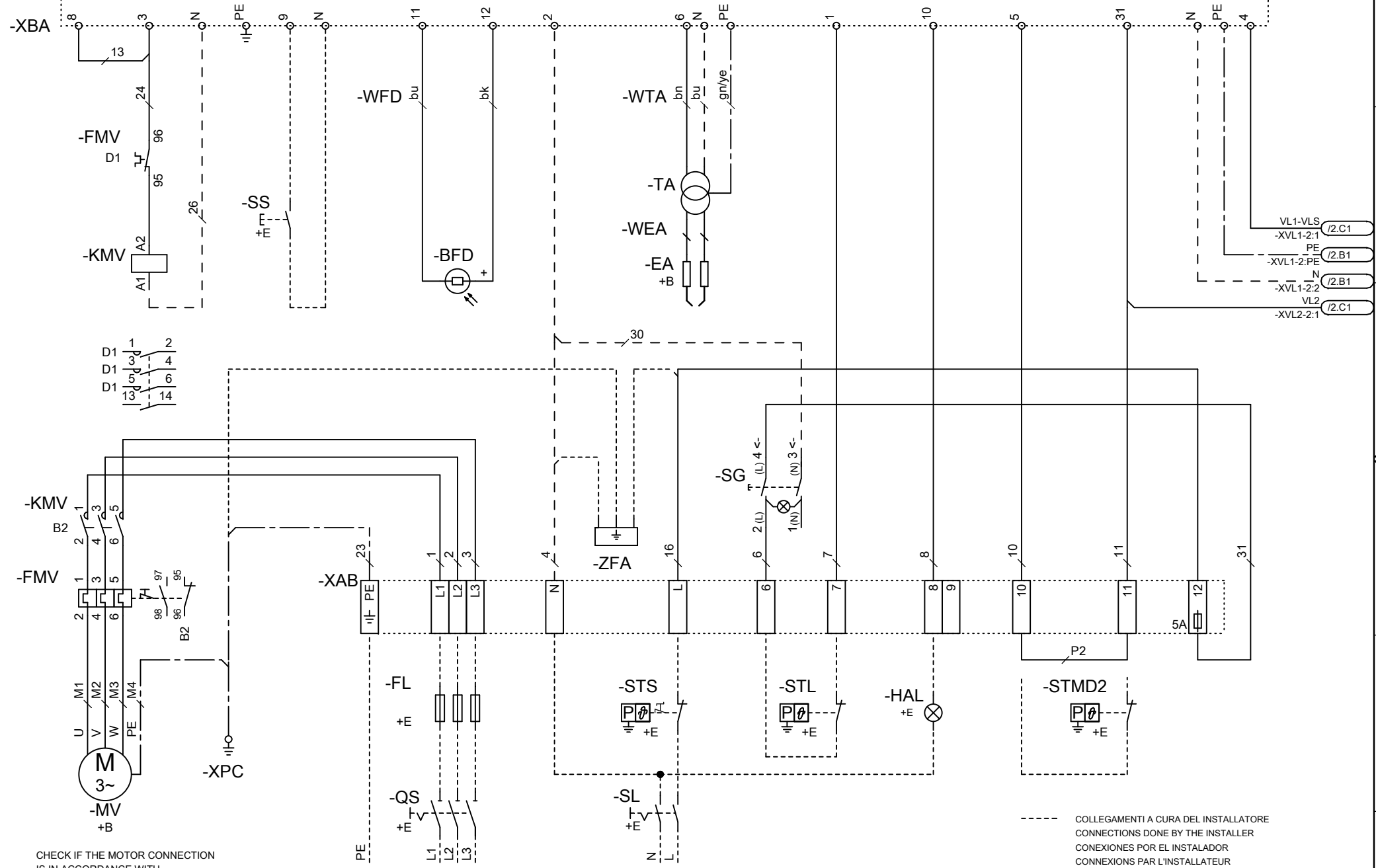
Created with ELCAD (R) 2019

Printed 25.08.2019 Time 10:41

Manual - Instructions		Note:	
-----------------------	--	-------	--

Special Specifications:			
	Date	23.08.2019	
	Designed by	Perinelli D.	0) DOCUMENT INDEX
	Contr.-App.	Berian S.	1)
		Origin:	
		Replaced for	
Rev.	Modification	Date	Name
		3~220/380-440V, 1/N~220-240V-50/60Hz	
		COD: 078580_1A	
		Page 1	
		1 Pg.	

SIEMENS "LMO 44..."



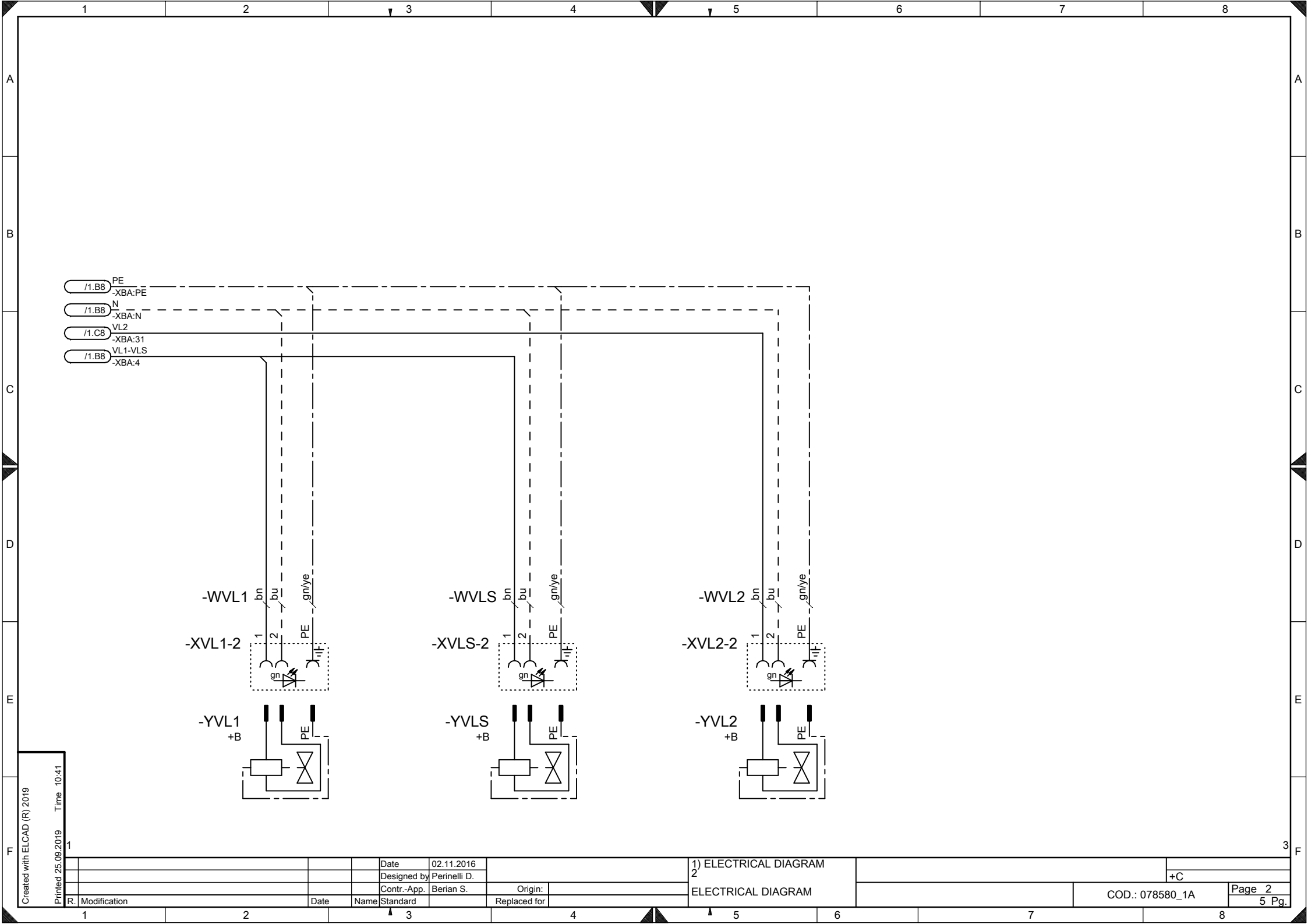
CHECK IF THE MOTOR CONNECTION IS IN ACCORDANCE WITH THE POWER SUPPLY !

3 ~ 220/380-440V-50/60Hz 1/N ~ 220-240V-50/60Hz

--- COLLEGAMENTI A CURA DEL INSTALLATORE
 --- CONEXIONES POR EL INSTALADOR
 --- CONNEXIONS PAR L'INSTALLATEUR
 --- ANSCHLÜSSE DURCH DEN INSTALLATEUR

Created with ELCAD (R) 2019
 Printed 25.08.2019 Time 10:41

R. Modification		Date	Name	Standard	Replaced for	1) ELECTRICAL DIAGRAM			
		23.08.2019	Perinelli D.			ELECTRICAL DIAGRAM			
			Berian S.					COD.: 078580_1A	
								Page 1	
								5 Pg.	

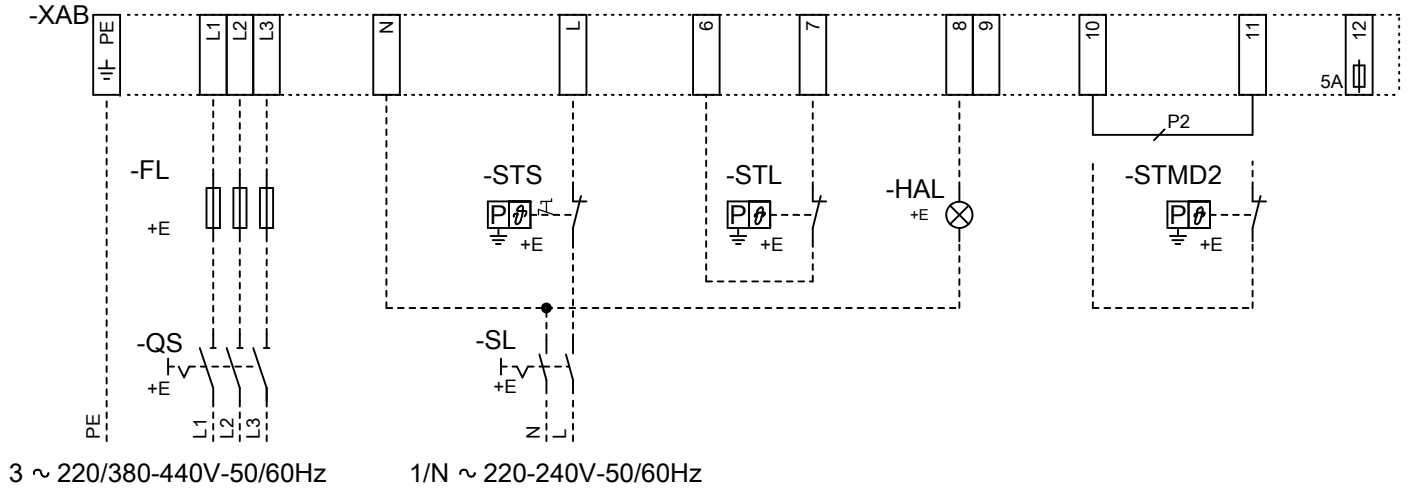


Created with ELCAD (R) 2019
 Printed 25.09.2019 Time 10:41

1				Date	02.11.2016		
				Designed by	Perinelli D.		
				Contr.-App.	Berian S.	Origin:	
R.	Modification	Date	Name	Standard		Replaced for	

1) ELECTRICAL DIAGRAM			
2) ELECTRICAL DIAGRAM			
		+C	
		COD.: 078580_1A	Page 2
			5 Pg.

----- COLLEGAMENTI A CURA DEL INSTALLATORE
 CONNECTIONS DONE BY THE INSTALLER
 CONEXIONES POR EL INSTALADOR
 CONNEXIONS PAR L'INSTALLATEUR
 ANSCHLÜSSE DURCH DEN INSTALLATEUR



3 ~ 220/380-440V-50/60Hz

1/N ~ 220-240V-50/60Hz

Created with ELCAD (R) 2019
 Printed 25.09.2019 Time 10:41

Date	12.10.2016
Designed by	Perinelli D.
Contr.-App.	Berian S.
Origin:	
Replaced for	

1) ELECTRICAL DIAGRAM
 3
 ELECTRICAL DIAGRAM

SIEMENS "LMO 44..."

-SL -STS -SG -STL

-XBA^{3/8} →

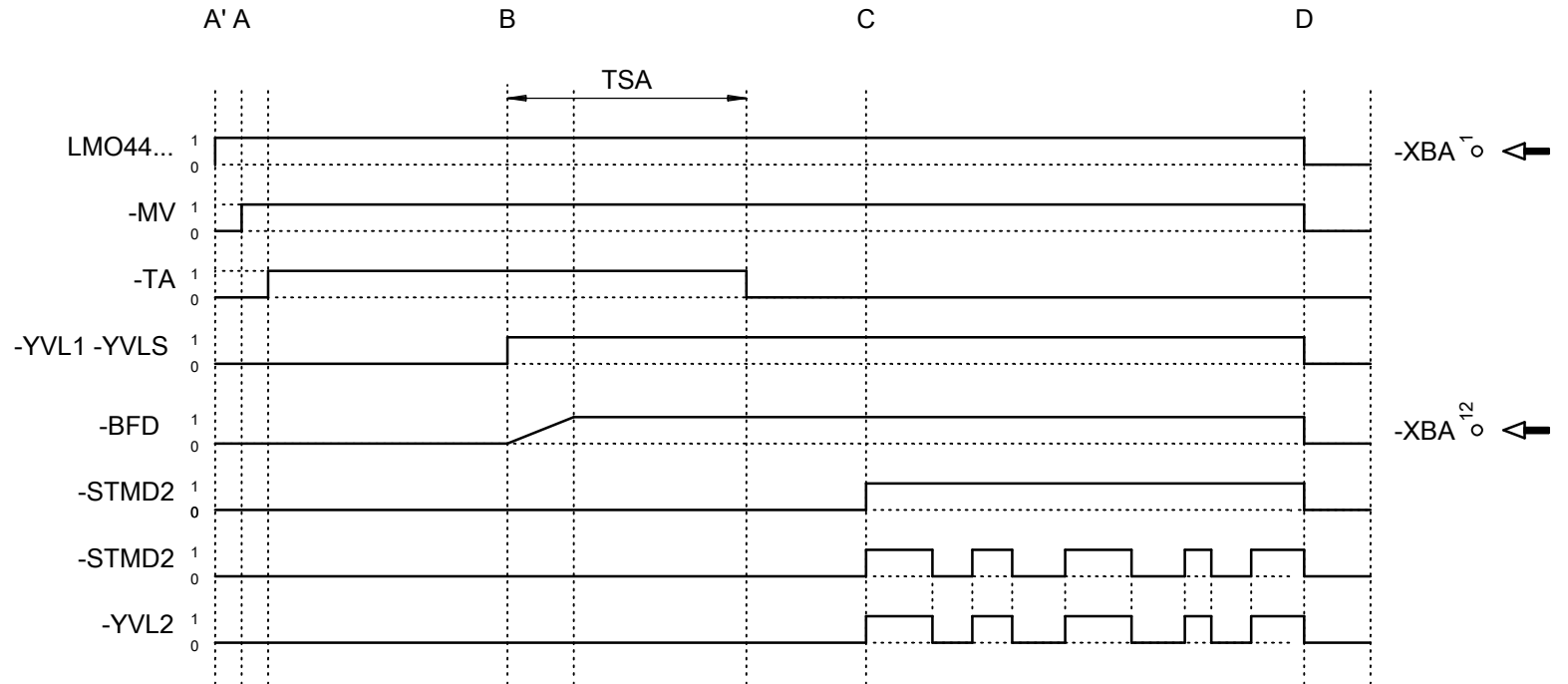
-XBA⁶ →

-XBA⁴ →

-XBA¹¹ →

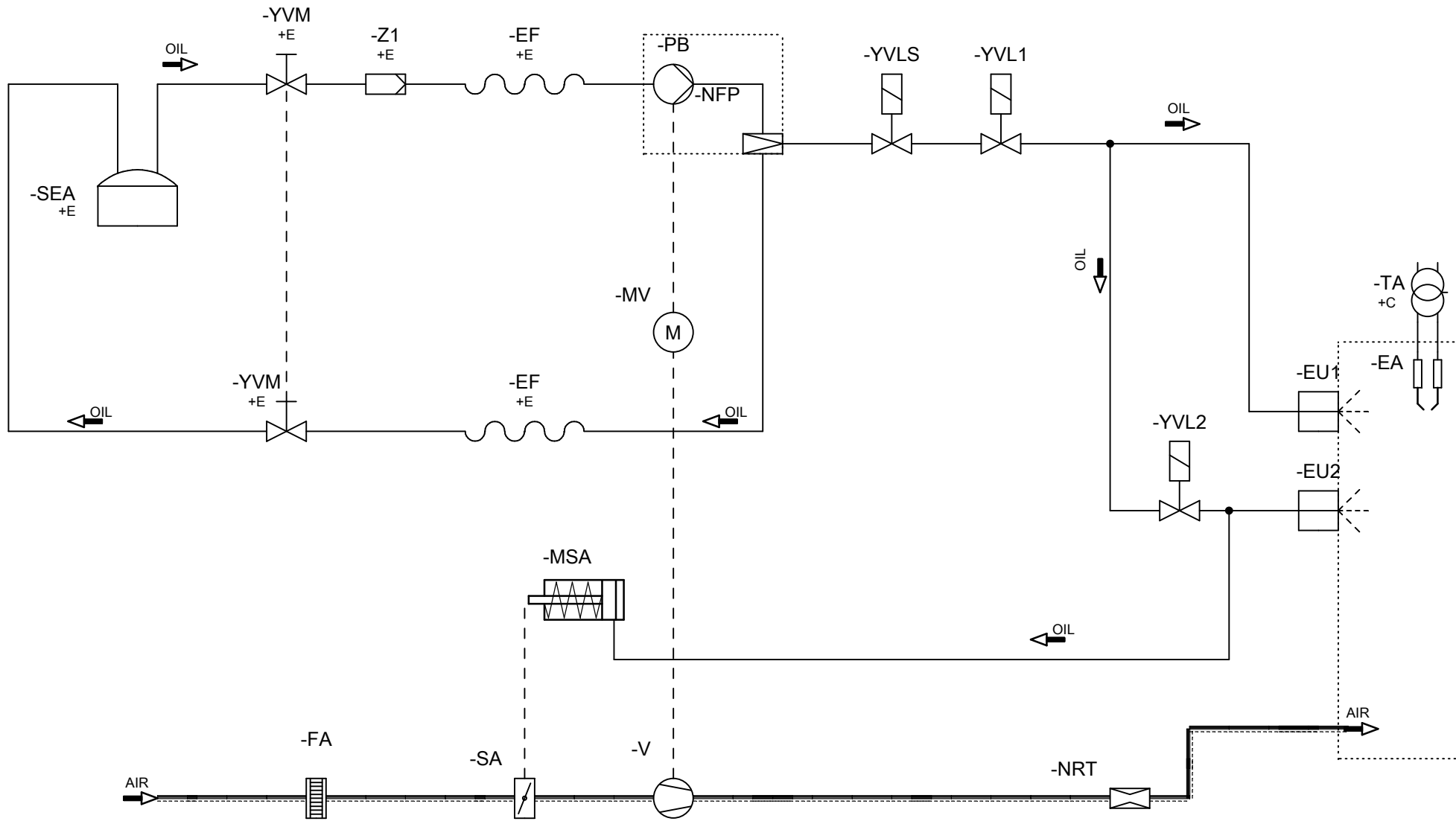
-XBA⁵ →

-XBA⁵ →



Created with ELCAD (R) 2019
 Printed 25.09.2019 Time 10:41

		Date	02.11.2016	1) ELECTRICAL DIAGRAM	
		Designed by	Perinelli D.	4	
		Contr.-App.	Berian S.		+C
R.	Modification	Date	Name	Standard	Replaced for
1					
				SEQUENCE DIAGRAM	
				COD.: 078580_1A	
				Page 4	
				5 Pg.	



Created with ELCAD (R) 2019
 Printed 25.09.2019 Time 10:41

Date	02.11.2016
Designed by	Perinelli D.
Contr.-App.	Berian S.
Origin:	
Replaced for	

1) ELECTRICAL DIAGRAM	
5	
FLOW CHART	
	+B
	COD.: 078580_1A
	Page 5
	5 Pg.

LEGEND

Nr.	ABBREVIATION	LOC.	DESCRIZIONE (IT)	DESCRIPTION (GB)	DESCRIPCION (ES)	DESCRIPTION (B-FR)
1	-BFD	+C	Fotodiode	Photo diode	Fotodiode	Photodiode
2	-EA	+B	Elettrodo accensione	Ignition electrode	Electrodo encendido	Électrode allumage
3	-EF	+E	Tubo flessibile (antivibrazione)	Flexible pipe (antivibration)	Tubo flexible (antivibración)	Tuyau flexible (antivibration)
4	-EU1	+B	Ugello 1° stadio	Nozzle 1° stage	Boquilla 1° fuego	Gicleur 1° étage
5	-EU2	+B	Ugello 2° stadio	Nozzle 2° stage	Boquilla 2° fuego	Gicleur 2° étage
6	-FA	+B	Griglia di protezione	Protection grate	Parrilla de protección	Gril de protection
7	-FL	+E	Fusibile di linea	Line fuse	Fusible de línea	Fusible de ligne
8	-FMV	+C	Relé termico motore ventilatore	Fan motor overload relay	Relé térmico motor ventilador	Relais thermique moteur ventilateur
9	-HAL	+E	Spia di blocco (allarme)	Lock-out lamp (alarm)	Lámpara de bloque (la alarma)	Lampe de bloc (alarme)
10	-KMV	+C	Contattore motore ventilatore	Motor fan contactor	Contactador motor ventilador	Contacteur moteur ventilateur
11	-MSA	+B	Martinetto serranda aria	Air shutter piston	Pistón clapeta de aire	Piston clapet d'air
12	-MV	+B	Motore ventilatore	Fan motor	Motor ventilador	Moteur ventilateur
13	-NFP	+B	Regolatore di pressione	Pressure controller	Regulador de presión	Régulateur de pression
14	-NRT	+B	Regolazione Testa Bruciatore	Burner Head Regulation	regulación prueba quemador	régulation teste brûleur
15	-PB	+B	Pompa bruciatore	Burner pump	Bomba quemador	Pompe brûleur
16	-QS	+E	Sezionatore	Disconnecter	Seccionador	Sectionneur
17	-SA	+B	Serranda aria	Air shutter	Clapeta de aire	Clapet d'air
18	-SEA	+E	Serbatoio d'alimentazione	Supply tank	Tanque d'alimentacion	Réservoir d'alimentation
19	-SG	+C	Interruttore generale ON/OFF	Mainswitch ON/OFF	Interruptor general ON/OFF	Interrupteur général ON/OFF
20	-SL	+E	Interruttore di linea	Line interrupter	Interruptor de línea	Interrupteur de ligne
21	-SS	+E	Pulsante di sblocco remoto	Remote unblocking push-button	Pusador de desbloqueo a distancia	Bouton de réarmement à distance
22	-STL	+E	Termostato o pressostato di lavoro	Operating thermostat or pressure switch	Termostato o presostato de trabajo	Thermostat ou pressostat de marche
23	-STMD2	+E	Termostato modulazione 2° stadio (togliere ponte P2)	2° stage modulation thermostat (remove bridge P2)	Termostato modulacion 2° fuego (sacar puente P2)	Thermostat modulation 2ème étage (enlever pont P2)
24	-STS	+E	Termostato o pressostato di sicurezza	Safety thermostat or pressure switch	Termostato o presostato de seguridad	Thermostat ou pressostat de sécurité
25	-TA	+C	Trasformatore di accensione	Ignition transformer	Transformador de encendido	Transformateur d'allumage
26	-V	+B	Ventilatore	Fan	Ventilador	Ventilateur
27	-XAB	+C	Morsettiera alimentazione bruciatore	Burner supply terminal block	Bornes alimentación quemador	Bornier alimentation brûleur
28	-XBA	+C	Morsettiera base apparecchiatura	Control box terminal block	Bornes de la centralita	Bornier de la boîte de contrôle
29	-XPC	+C	Morsetto piastra cablaggio	Wiring terminal plate	Bornes placa cableado	Borne plaque câblage
30	-XVL1-2	+C	Presa elettrovalvola Gasolio 1° stadio	1° stage Light-oil solenoid valve socket	Toma electrovalvula Gasóleo 1° fuego	Prise electrovanne Gas-oil 1er étage
31	-XVL2-2	+C	Presa elettrovalvola Gasolio 2° stadio	2° stage Light-oil solenoid valve socket	Toma electrovalvula Gasóleo 2° fuego	Prise electrovanne Gas-oil 2ème étage
32	-XVLS-2	+C	Presa elettrovalvola Gasolio di sicurezza	Light-oil safety solenoid valve socket	Toma electrovalvula Gasóleo de seguridad	Prise electrovanne Gas-oil de sécurité
33	-YVL1	+B	Elettrovalvola Gasolio 1° stadio	1° stage Light-Oil solenoid valve	Electrovalvula Gasóleo 1° fuego	Electrovanne fioul 1er étage
34	-YVL2	+B	Elettrovalvola Gasolio 2° stadio	2° stage Light-Oil solenoid valve	Electrovalvula Gasóleo 2° fuego	Electrovanne fioul 2ème étage
35	-YVLS	+B	Elettrovalvola Gasolio di sicurezza	Light-Oil safety solenoid valve	Electrovalvula Gasóleo de seguridad	Electrovanne fioul de sécurité
36	-YVM	+E	Valvola di arresto manuale	Manual-stop valve	Válvula de detención manual	Vanne d'arrêt manuel
37	-Z1	+E	Filtro	Filter	Filtro	Filtre
38	-ZFA	+C	Filtro antisturbo	Interference filter	Filtro antiinterferencia	Filtre antiparasite

Note:

Created with ELCAD (R) 2019

Printed 25.09.2019 Time 10:41

Date	23.08.2019	2) LEGEND 1	COD: 078580_1A	PAGE1 1 Pg.	
Designed by	Perinelli D.				
Contr.-App.	Berian S.				
R. Modification	Date	Name	Standard	Original	replaced for

